

# LINK

## Ashburn Farm Shuttle Bus Service to/from the Dulles North Transit Center

**FREE**

For more information, please contact the Loudoun County  
Office of Transportation Services at 1-877-GO-LCBUS.



**1. Parkhurst Plaza Shopping Center** - Summerwood Circle & Ashburn Farm Parkway. There are spaces in the satellite parking lot that is at the northeast corner of Summerwood Circle & Ashburn Farm Parkway.

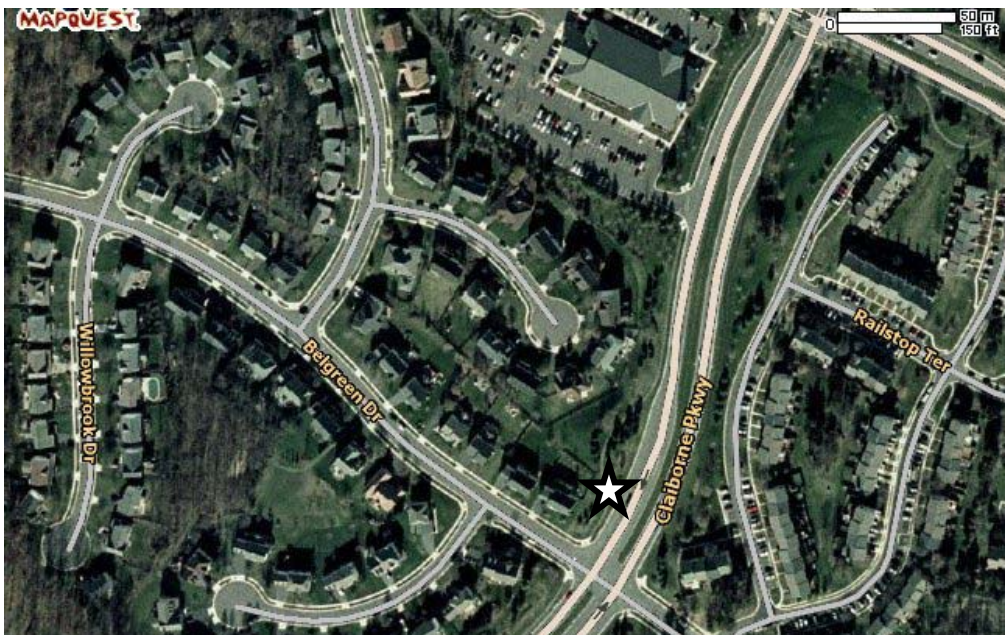
Commuters will park in the lot, which is accessible via Hedgerow Terrace, and follow the trail to Ashburn Farm Parkway. The shuttle bus will pull into the right turn lane and pick up passengers just before Summerwood Circle.

There is a bus stop sign at the pick up location. There are no lights at this lot so you may want to bring a flashlight.



**2. Crossroads United Methodist Church** – 43454 Crossroads Drive, Ashburn VA. This lot is located across the street from the church. It is a gravel satellite lot with 90 spaces. Commuters will park in the lot and follow the trail to Ashburn Farm Parkway.

After 8:45 am, there will be no parking on this lot but walk ups are welcome. The shuttle bus will pull into the right turn lane and pick up passengers just before Junction Plaza. There is a bus stop sign at the pick up location. There are no lights at this lot so you may want to bring a flashlight. There is a bicycle rack available at this lot.



**3. Claiborne Parkway at Belgreen Drive** – Northwest corner of intersection. This is a walk to location. There are no parking spaces available. The shuttle bus will pull into the right turn lane on Claiborne Parkway and pick up passengers just before Belgreen Drive. There is a bus stop sign at the pick up location.

The morning shuttle buses will run every 15 minutes beginning at 5:00 am. The first bus stop will be at Parkhurst Plaza Shopping Center, the second bus stop will be at Crossroads United Methodist Church a few minutes later and the third bus stop will be at Claiborne Parkway & Belgreen Drive a few minutes after that. After this pick up the shuttle bus will proceed on the Greenway to Dulles North. The last bus will leave Parkhurst Plaza at 9:00 am. If there are no passengers standing at the bus stop signs the buses will not stop.

The afternoon shuttle buses will run every 15 minutes beginning at 4:00 pm or with the arrival of the DS1 at the Dulles North Transit Center, whichever occurs first. The shuttle buses will pick up passengers at Bus Shelter 4 at the Dulles North Transit Center. The evening bus stops for drop off will be identical, in order, to the morning. The last bus will leave the Dulles North Transit Center at 8:00pm or when the M2 pm bus drops off passengers.

There will be no shuttle bus service on limited schedule holidays.

The Midday bus will not be serviced by the shuttle.



# LINK

## Ashburn Farm Shuttle Bus Service to/from The Dulles North Transit Center

Service starts  
September 2, 2008

**FREE**