



Supervisor Tony Buffington  
**Blue Ridge District**  
*NewsFlash*



## Round Hill to Franklin Park Trail and Main Street Improvement Project Updates

### Progress Continues!

Sent: September 16, 2021

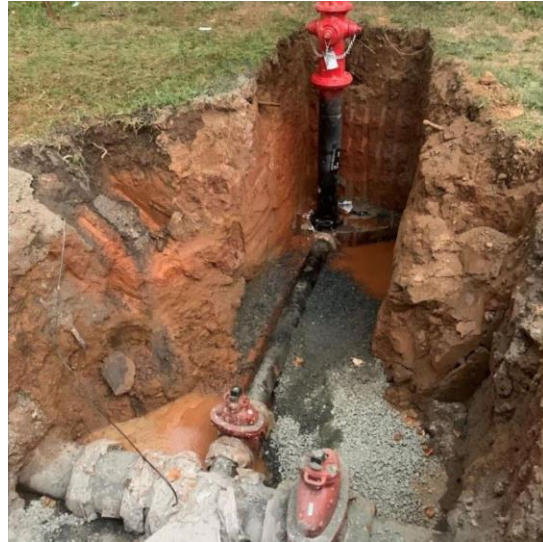
Over the next several weeks, construction crews will continue storm water work for the Round Hill to Franklin Park Trail [project](#).

Due to unanticipated utility conflicts, work to install storm drains on East Loudoun Street westbound towards Main Street northbound will continue for the next several weeks.



Work is also underway to install storm water structures and storm drains for the Main Street Improvements portion of the project.

In addition to storm water work, crews continue grading work at the Franklin Park Trail. The installation of culverts at stream crossings and dewatering devices along the ditch lines is nearing completion.



---

### **About the Round Hill to Franklin Park Trail and Main Street Improvement Projects**

The project includes the design and construction of sidewalks and a shared-use path (pedestrian and bicycle) from the center of the Town of Round Hill to Franklin Park in western Loudoun County. This link will include concrete sidewalks along both sides of East Loudoun Street and Main Street to the location of the former W&OD railroad station.

In addition, the project includes county management of the Town of Round Hill's Main Street pedestrian and streetscape project. Additional Main Street and East Loudoun Street enhancements include curbs, curb ramps, retaining walls and a new storm drainage system.

When the project is completed, pedestrian connectivity between Round Hill and Franklin Park will be established, and pedestrian access and safety along East Loudoun Street and Main Street will be improved.

More information, including a link to sign up for updates on the project, can be found at [loudoun.gov/roundhilltrail](http://loudoun.gov/roundhilltrail).

---

All our best!



Tony Buffington  
Blue Ridge District Supervisor  
[tony.buffington@loudoun.gov](mailto:tony.buffington@loudoun.gov)

Rachael Holmes  
Chief of Staff  
[rachael.e.holmes@loudoun.gov](mailto:rachael.e.holmes@loudoun.gov)

Robin Bartok  
Legislative Aide  
[robin.w.bartok@loudoun.gov](mailto:robin.w.bartok@loudoun.gov)

Christi Maple  
Legislative Aide  
[christi.maple@loudoun.gov](mailto:christi.maple@loudoun.gov)

Click [here](#) to Like us on Facebook!

---



---

**Disclaimer:** Supervisor Buffington and his staff make every effort to share accurate, timely, relevant and helpful information; however, he nor his staff are liable for inaccuracies, errors, omissions, misrepresentations or otherwise unhelpful or harmful information. The sharing of third party non-County affiliated information is not an endorsement of such information and he nor his staff are liable for inaccuracies, errors, omissions, misrepresentations, or otherwise unhelpful or harmful information from the sharing of such third party non-County affiliated information. Use of the information shared by Supervisor Buffington and his staff is at sole discretion of the user(s), and user(s) accepts all liability and responsibility for his/her/their actions regarding use of the information shared.

Constant Contact Data Notice

Sent by tony.buffington@loudoun.gov powered by

