

Press Release:

Loudoun Supervisors Applaud Announcement of Greenway Widening to Improve Eastern Merge onto Dulles Toll Road

December 21, 2017

Following pressure from Loudoun County Supervisors Tony Buffington, Matt Letourneau and Ron Meyer, TRIP II (Dulles Greenway) has initiated a project to add an additional lane in the eastbound direction of 267 east of the toll plaza toward the merge with the Dulles Toll Road.

Supervisors Buffington and Letourneau introduced a Board Member Initiative last year to initiate a review of the comprehensive agreement between the Greenway and VDOT. In the course of that discussion, the Supervisors learned that regular oversight of Greenway ramps and interchanges had not been occurring, leading to concerns about the level of service at the entrance and exit to the Greenway, and at certain interchanges.

As a result of those concerns, the Greenway made some lane modifications to two interchanges, at Loudoun County Parkway and at Route 772. The Board of Supervisors most recently discussed ongoing concerns about Greenway traffic at its December 8th meeting.

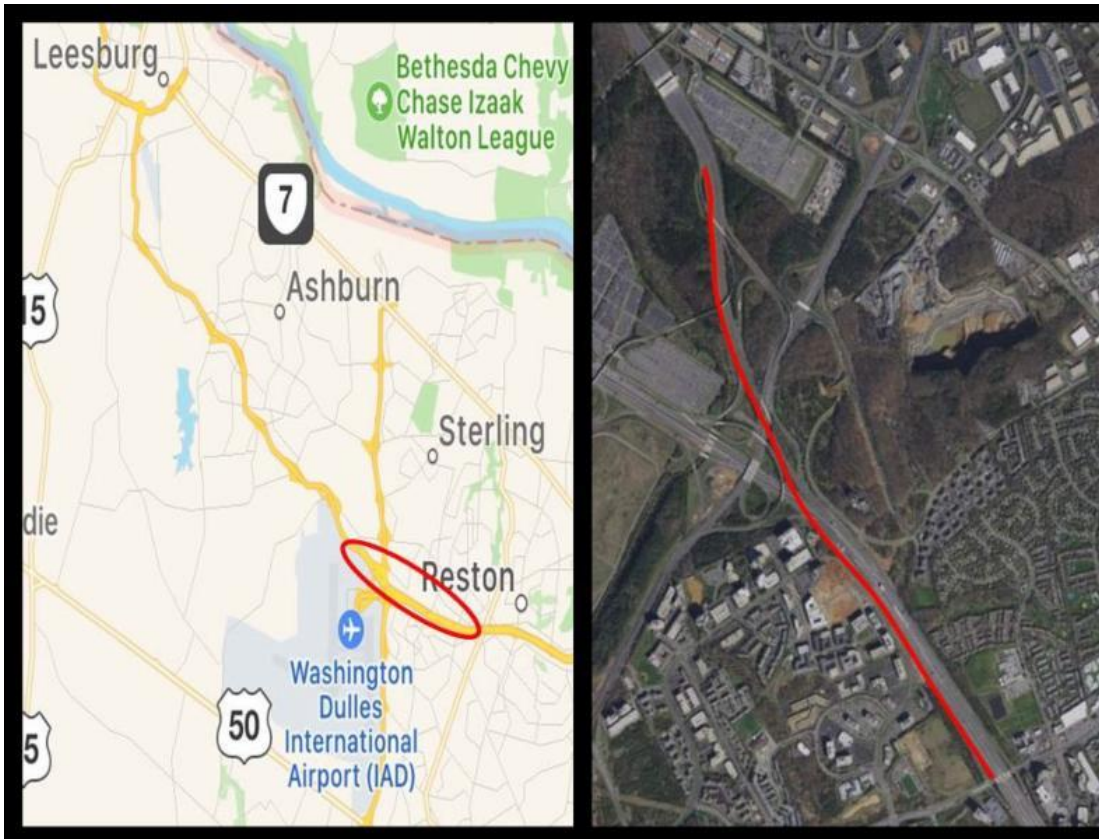
Now, the Greenway is proposing to construct a 1,900' new 3rd lane within existing right of way from the toll plaza to the Centreville Road off ramp. The project would cost about \$25 million, to be financed privately, and would be completed by Spring of 2019. The request was discussed yesterday at a meeting of the Metropolitan Washington Council of Government's Transportation Planning Board, of which Supervisor Meyer is a member.

The Supervisors had the following comments regarding the announcement:

Blue Ridge District Supervisor Tony Buffington: "I appreciate the Greenway's response to our efforts and look forward to continued success. This much needed project, along with others already complete, will reduce commuting times for residents throughout my District. Moving forward, I'm particularly interested in a plan for reducing congestion at the northern end of the Greenway for those exiting onto Rt 7 West towards Purcellville, Round Hill, Bluemont, Hillsboro and other western Loudoun destinations."

Dulles District Supervisor Matt Letourneau: "Loudoun commuters pay some of the highest tolls in the country. At the very least, they shouldn't have to experience major congestion on those toll roads. Yet currently, that is exactly what is occurring on 267 approaching Route 28. I'm pleased that our efforts to shine a light on this issue have spurred some action to provide relief."

Broad Run District Supervisor Ron Meyer: "If you're paying \$6, these major backups really shouldn't exist. The Greenway's announcement shows they plan to live up to that part of their agreement with VDOT -- which is major progress. This won't stop the County's urgency in building parallel routes like Shellhorn Road extended to Route 28, but it is welcomed relief to frustrating congestion."



All my best,

Tony Buffington
Blue Ridge District Supervisor
tony.buffington@loudoun.gov

Shevaun Hochstetler
Chief of Staff
shevaun.hochstetler@loudoun.gov

Rachael Holmes
Legislative Aide
rachael.e.holmes@loudoun.gov

Pamela Keegan
Legislative Aide
pamela.keegan@loudoun.gov

Supervisor Tony Buffington | Loudoun County Board of Supervisors | 703-777-0210 |
tony.buffington@loudoun.gov | www.loudoun.gov/blueridge

Blue Ridge District, 1 Harrison Street, S.E. 5th Floor,
PO Box 70000, Leesburg, VA 20177-7000

[About our service provider](#)

Sent by tony.buffington@loudoun.gov in collaboration with

Constant Contact 

Try it free today