



# Chair Phyllis J. Randall

---

## Newsletter



## Hello, Loudoun

Governor Ralph Northam announced last week that Virginia—including Loudoun County and the rest of Northern Virginia—will move into Phase Three of the state's gradual reopening on Wednesday, July 1st. Governor Northam indicated Virginia's health metrics "continue to look good," citing the downward trend in the percent of positive tests and hospitalizations due to COVID-19, sufficient hospital capacity and personal protection equipment (PPE) and ventilators, increasing testing capacity and the hiring by the Virginia Department of Health of at least 1,000 contact tracers.

I've received quite a few e-mails asking me to request that the Governor not allow Loudoun to move to Phase Three on Wednesday, July 1st. While I understand your concerns, I will NOT do that for the following reasons:

1. As it has always been, the decisions on the phasing are regional. Why? Because NOVA is a very interconnected region, and our hospital's are regional hospital systems.
2. We have capacity in our hospitals, we have adequate PPE and ventilators.
3. NOVA's five State Health Directors are NOT recommending to the County Administrators nor the five Chief Elected Officials that we remain in Phase 2.
4. I am using the same criteria as well as taking the advice of the same Health Directors. Why? Because I don't have the medical expertise to make these decisions, it is incumbent on me to listen now, just as I listened before to those who have expertise. Decisions I make are based in data and facts.
5. We know so much more now than we did in January, February and March.
6. In Loudoun, we are now in constant contact with our elder care and age in place communities. We have adequate amounts of face masks to share with these facilities.
7. Finally, if we all do our part we can learn to live with this virus until there is a vaccine.

## Phase Three

Highlights of Phase Three include:

- Increasing the number of people allowed to gather in groups of up to 250 people; the restrictions do not apply to people performing functions of their employment.
- Allowing restaurants, breweries, wineries, etc., to offer indoor service in accordance with a number of guidelines, including seating patrons six feet apart.
- Allowing brick and mortar retail stores and personal grooming businesses to operate with a number of guidelines, including physical distancing.
- Allowing fitness centers, gymnasiums, etc., to operate in accordance with a number of guidelines, including keeping patrons at least ten feet apart, following mandatory cleaning and disinfection practices and limiting the total number of attendees to 75% of the facility’s occupancy capacity.
- Allowing outdoor and indoor swimming pools to open at 75% capacity in accordance with a number of guidelines, including physical distancing.
- Allowing people to attend religious services in accordance with a number of guidelines, including seating attendees six feet apart (except for family members), and disinfecting frequently-contacted surfaces before and after religious services.
- Allowing entertainment venues, such as, bowling alleys, movie theaters, performing arts centers, museums, etc., to reopen at 50% of the facility’s occupancy capacity, up to 1,000 people.
- Allowing child care facilities to open.
- Allowing indoor and outdoor recreational sports to take place with ten feet of physical distance between all instructors, participants, and spectators, where practicable; and with some attendance limitations.

## Forward Virginia: Phase Three

	PHASE TWO	PHASE THREE
NON-ESSENTIAL RETAIL	Open with 50 percent capacity	Open
RESTAURANTS AND BEVERAGE SERVICES	Indoor and outdoor seating at 50 percent capacity	Open
ENTERTAINMENT VENUES	Low-contact indoor and outdoor open; high-contact closed	Open with 50 percent capacity
FITNESS AND EXERCISE	Open with 30 percent capacity	Open with 75 percent capacity
BEACHES	Open	Open
GATHERINGS	50-person limit	250-person limit
TELEWORKING	Strongly encouraged	Strongly encouraged
FACE COVERINGS	Required	Required
CHILDCARE	Open	Open
PERSONAL GROOMING	Appointment only	Open
PRIVATE CAMPGROUNDS	Open	Open
OVERNIGHT SUMMER CAMPS	Closed	Closed
STATE PARKS	Open	Open

Please see Phase Three guidelines for all business sectors at the link below.

### Phase Three Guidelines for all Business Sectors

The Department of Parks, Recreation and Community Services (PRCS) will be opening many facilities, programs and services. Please visit the PRCS website below for more information.

[PRCS website](#)

All Loudoun County Public Library locations are open with some limitations on services. All branches, with the exception of the Law Library in Leesburg will be open Monday through Thursday, 10 am to 8 pm, and Friday through Saturday, 10 am to 5 pm. The Law Library is open Monday through Friday, 8 am to 4 pm. Please see the website below for reopening information.

[Loudoun County Public Library reopening website](#)

## Rent and Mortgage Relief Program

Governor Northam just launched a Rent and Mortgage Relief Program (RMRP), which will provide \$50 million in federal Coronavirus Aid, Relief, and Economic Security (CARES) Act funding for households facing eviction or foreclosure due to COVID-19. Eligible households must demonstrate an inability to make rent or mortgage payments due to the COVID-19 pandemic. Monthly rent or mortgage must be at or below 150 percent Fair Market Rent (FMR), and eligible households must have a gross household income at or below 80 percent of area median income (AMI). To identify the local RMRP administering organization for a household and to conduct a self-assessment for eligibility, visit the website below.

[RMRP Program website](#)

## Mask Donation

Loudoun generously received 12,000 face masks last week; 10,000 on behalf of our sister city New Taipei City, Taiwan, and 2,000 from Loudoun resident Grandmaster Choi, who is a community leader and owner of USTMA Taekwondo.

The masks will be used at Loudoun's elder care centers and other County facilities. Please join me in thanking our partners in New Taipei City and Grandmaster Choi. We really are all in this together.



## Confederate Statue

I have been repeatedly asked when the Board of Supervisors is going to address the Confederate statue on the courthouse grounds in Leesburg. For almost two decades, I have argued forcefully that a monument to the Confederacy sitting on public property, paid for with taxpayer dollars, is unacceptable.

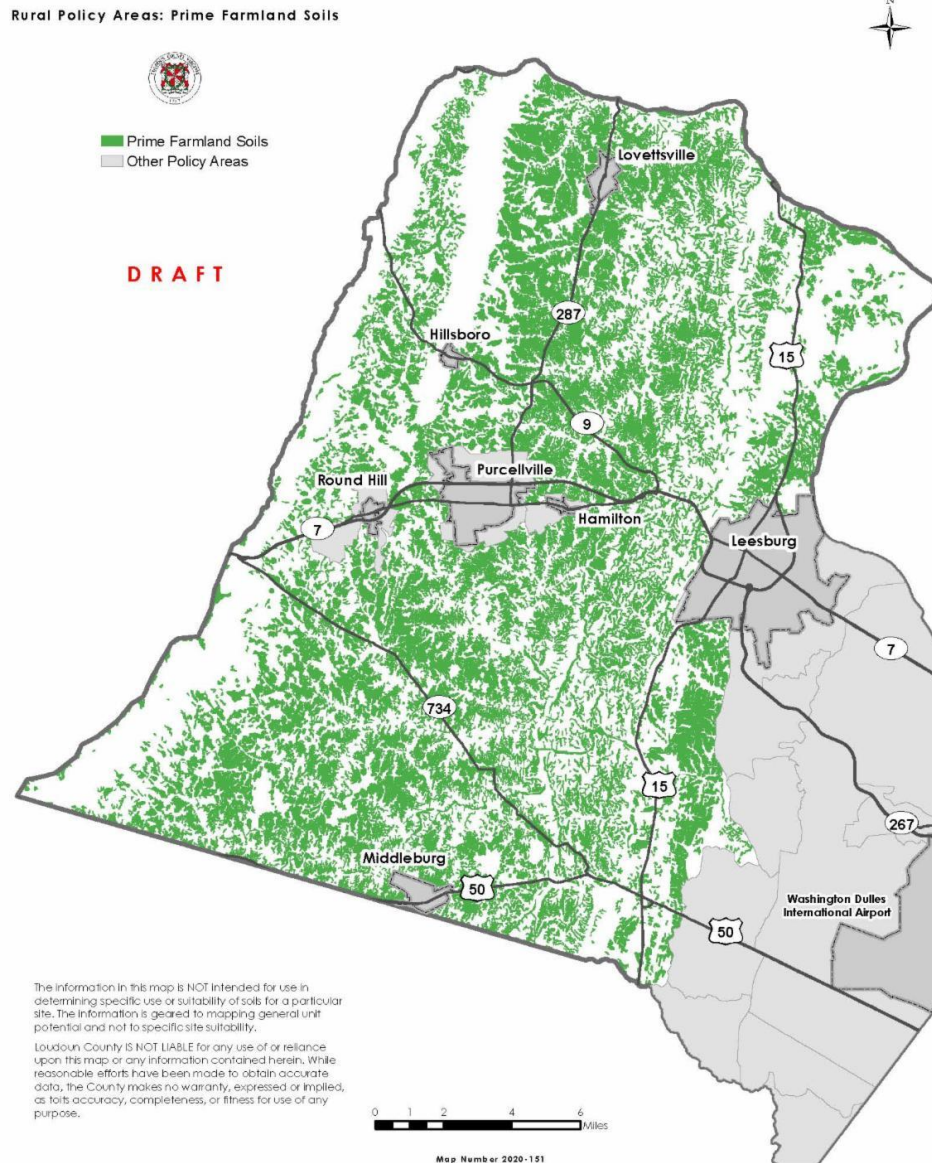
This year's General Assembly overturned the State's prohibition on the removal of Confederate war memorials and set forth a process for removal. The Board will take up this item at the business meeting on Tuesday, July 7th. As Chair, I reserve the right to make the motion as it pertains to the removal of that statue. Until then, no person should attempt to remove, deface or alter that statue in any manner. To do so could result in legal charges.

It is truly remarkable that the Board just received a letter on behalf of the Loudoun Chapter (#170) of the United Daughters of the Confederacy reaffirming the statue belongs to them and requesting the return of the statue. I will need to speak to the County Administrator as well as my colleagues on the Board to work out the details; however, I support the United Daughters of the Confederacy retrieving their statue.

If you wish to speak at the 6:00 pm public input session, please call (703) 777-0200 to sign-up to speak. Public input at business meetings is limited to a 1 ½ hour time period. The order of and the number of speakers will be determined on first call in/register basis. Advanced sign-up is open until noon the day of the business meeting.

## Rural Cluster Development and Prime Ag Soils

At the July 16th Board business meeting, I sponsored a Board Member Initiative (BMI) with Supervisor Buffington to amend ordinances and revise regulations to improve cluster developments and protect and conserve agriculturally productive prime agricultural soils in rural Loudoun County (please see map below).



I appreciate the support and input from residents and organizations on this BMI, which was approved unanimously. As an update, staff will bring the Zoning Ordinance

Amendment (ZOAM) work plan to the July 21st Board business meeting. This item will provide project information and anticipated timelines for all active ZOAMs and will include the BMI. The ZOAM work plan will also allow the Board to prioritize the work efforts. At this meeting, I anticipate the Board will prioritize the Rural Cluster Development and Prime Agricultural Soil Amendments BMI ZOAM in the work plan, to develop the Resolution of Intent to Amend, which is the first step.

---

We have many tough decisions to make as a community. I believe in us and know that we are a County who will commit to standing strong together. Thank you.

Phyllis Randall  
Chair, Loudoun County Board of Supervisors  
[phyllis.randall@loudoun.gov](mailto:phyllis.randall@loudoun.gov)

Jeanine H. Arnett  
Chief of Staff  
[jeanine.arnett@loudoun.gov](mailto:jeanine.arnett@loudoun.gov)

Laura TeKrony  
Legislative Aide  
[laura.tekrony@loudoun.gov](mailto:laura.tekrony@loudoun.gov)

Sarah Tuggle  
Legislative Aide for Behavior and Community Health  
[sarah.tuggle@loudoun.gov](mailto:sarah.tuggle@loudoun.gov)

Elizabeth Bennis  
Executive Assistant  
[elizabeth.bennis@loudoun.gov](mailto:elizabeth.bennis@loudoun.gov)

## Investing in Transportation

**Belmont Ridge Road at the Dulles Greenway:** Belmont Ridge Road now has two lanes in each direction at the Dulles Greenway interchange, with two-foot shoulders on both sides. On the bridge, the widening was done entirely within the existing deck. The project will reduce congestion and improve safety and operations by eliminating the previous bottleneck along the half-mile stretch. Also, a new traffic signal is now in operation at Belmont Ridge Road and the westbound Dulles Greenway on- and off-ramps. For more information, please visit VDOT's [\*\*project website\*\*](#).

**Route 7 and Battlefield Parkway Interchange:** The project to replace the traffic signal at Route 7 and Battlefield Parkway with a grade-separated interchange will have a detour for 10 months beginning August 2020. The detour route is via Russell Branch Parkway, River Creek Parkway and Fort Evans Road. Please see the map below and visit VDOT's [\*\*project website\*\*](#) for more information. Project completion is scheduled for November 2021.



**Route 9 in Hillsboro:** VDOT approved the Town of Hillsboro’s request to extend the existing full closure of Route 9 within the Town through August 15th. As a result of the progress being made under full closure during this extraordinary time of low traffic volumes, two periods of full closure that were originally scheduled for November and December 2020 have been eliminated. Extending the full closure now also offers the opportunity for resumption of some two-way traffic in the late Fall—months ahead of the original plan. Please see the detour map below.

## REGIONAL DETOUR MAP



## Community Information

**Loudoun County Transit:** Metro connection bus routes 990 and 992 will resume on Monday, July 6th. This comes as Loudoun County moves into Phase Three of the “Forward Virginia” reopening plan. Customers are advised of the following schedule changes:

- Route 990 – Morning service from Wiehle-Reston East Metro Station to Loudoun County has been reduced from seven to four trips.
- Route 992 – Afternoon service from Loudoun County to Wiehle-Reston East Metro Station has been reduced from seven to four trips.

Stay informed about the latest bus service change information and access schedules at the website below.

[Bus changes website](#)

**Denise Corbo's Corner**  
School Board Member, At-Large





While each of our families have been adjusting to guidelines to keep us safe, the School Board continues to work with our staff on the Return to School Plan.

As Loudoun County moves into Phase Three, we are carefully monitoring guidance from the Governor, CDC, VDOE and are in close communication with the Loudoun County Health Department. The School Board's top priority is the safety and mental health of our students and staff. This means we must provide a plan that is equitable and acknowledges the complexities of everyone especially our special needs students and parents. We anticipate developing a plan for the upcoming school year that provides students the opportunity for both in person and distance based learning with the caveat of knowing these plans are contingent on the evolving health guidance.

I want to thank everyone for their messages and social media posts expressing your thoughts and concerns as we hope to finalize our 2020/2021 school opening plan.

Next year, staff, parents and students can look forward to a new Learning Management System. Our teachers will utilize the Schoology platform to help organize online programs and assignments for their students. Training modules throughout the summer are available for teachers and training for parents and students will be offered in the Fall.

Finally, I want to acknowledge and wish my best to the Class of 2020. Even though your graduation was not the one you had envisioned at the beginning of the year, I want to thank you for the sacrifice you made and your hard work throughout your time in LCPS. To the Kindergarten class I taught at Mill Run who graduated this year and the rest of the Class of 2020, I hope you step into the future with purpose, vision, passion, energy and hope.

Chair Phyllis Randall | 1 Harrison St., S.E., 5th Floor, Leesburg, VA 20175

[About Constant Contact](#)

Sent by [phyllis.randall@loudoun.gov](mailto:phyllis.randall@loudoun.gov) in collaboration with



Try email marketing for free today!