

**LOUDOUN COUNTY HOUSING UNITS:
2019 ESTIMATE SERIES**



Annual Housing Units - 2000 to 2019

	Housing Units	Annual Growth #	Annual Growth %
2000 actual	62,160	--	--
2001 estimate	68,374	6,214	10.0%
2002 estimate	74,237	5,863	8.6%
2003 estimate	79,546	5,309	7.2%
2004 estimate	85,525	5,980	7.5%
2005 estimate	91,828	6,303	7.4%
2006 estimate	97,592	5,764	6.3%
2007 estimate	101,851	4,259	4.4%
2008 estimate	104,840	2,989	2.9%
2009 estimate	107,008	2,168	2.1%
2010 actual	109,442	2,434	2.3%
2011 estimate	111,796	2,354	2.2%
2012 estimate	114,432	2,636	2.4%
2013 estimate	118,147	3,715	3.2%
2014 estimate	122,366	4,219	3.6%
2015 estimate	126,468	4,102	3.4%
2016 estimate	129,773	3,305	2.6%
2017 estimate	133,351	3,578	2.8%
2018 estimate	136,602	3,251	2.4%
2019 estimate	140,200	3,598	2.6%

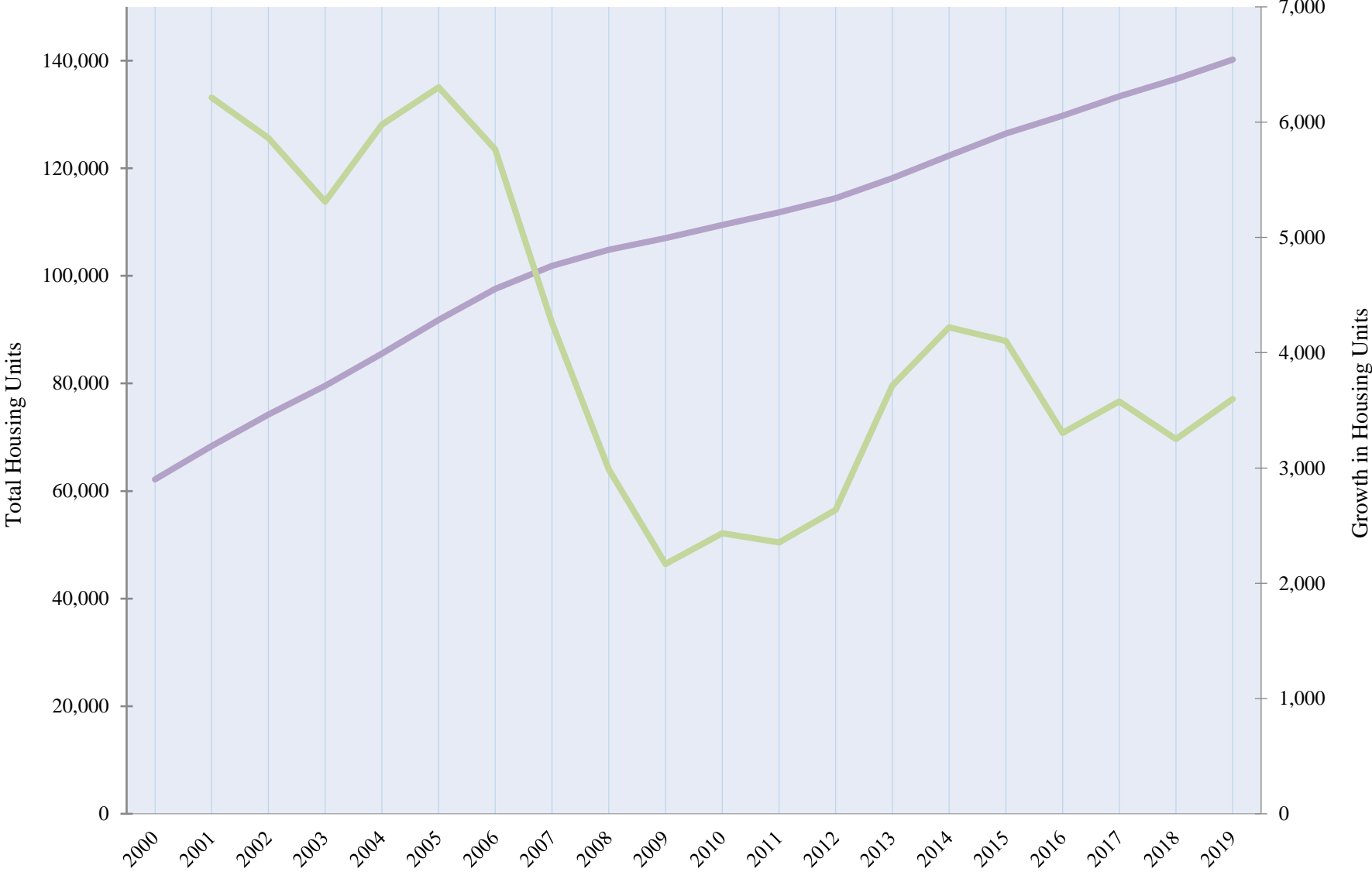
Sources:

Actuals: U.S. Census Bureau, Decennial Census.

Estimates: Loudoun County Department of Management & Budget, August 2019.

Note: The reference date for all data is April 1 of the given year.

Housing Units Trend 2000 to 2019, Loudoun County



Sources: U.S. Census Bureau, 2000 and 2010 Census; Loudoun County Department of Management & Budget, August 2019 Estimates Series.

— Housing Units — Housing Unit Growth