



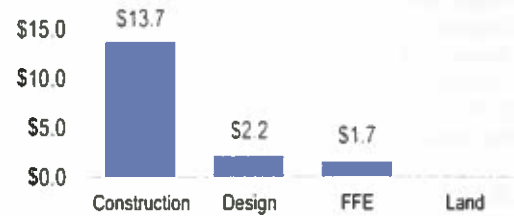
**Public Safety**

**Fire and Rescue - Station #28 - Leesburg South Station**

**Details**

Project Number: n/a  
 Election District: Catoclin  
 Square Feet: 25,000  
 Location: Adjacent to Sycolin Elementary School  
 Estimated Completion Year: FY 2025  
 Referendum: November 2019

**Phase Costs in Millions**

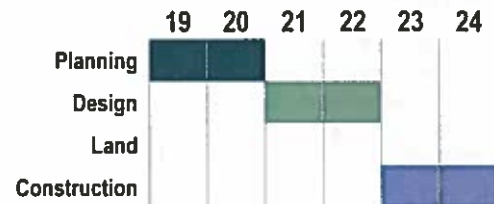


**Background**

This project provides funding to construct a fire and rescue station at an appropriately zoned, five-acre site.

The Fire Station was originally planned to be co-located with the Public Safety Firing Range on a 19-acre site proffered to the County as part of the Leesburg West rezoning application, ZMAP-2008-0009. Significant deficiencies were identified on Shreve Mill Road prompting the search for alternative site locations in the Evergreen Mills corridor that avoid the identified roadway restrictions on Shreve Mill Road for large vehicles and extend the County's improved Insurance Service Office (ISO) rating to more communities.

**Project Phase Timeline by FY**



The facility will include: apparatus bays, bunkroom facilities, a training room, break room, restrooms, showers, food preparation and dining areas, laundry and decontamination areas, supply storage, a gear and hose drying area, a breathing apparatus air compressor room, a fitness room, offices, and a repair shop. Staffing for the Fire and Rescue Station will be 24 hours, seven days a week for a pumper, ambulance, tanker and the Loudoun County Fire and Rescue's Hazardous Materials Team. The Hazardous Materials Team is currently located at Fire Station 19 (South Riding which is a less central geographic location). The re-location of this program will more effectively ensure timely response to high risk events involving the release of hazardous materials.

Capital (\$ in 1000s)	Prior	FY 2019 - FY 2024						6 Year	Future	Project
	Alloc.	FY 2019	FY 2020	FY 2021	FY 2022	FY 2023	FY 2024	Total	FYs	Total
Professional Services	-	-	-	2,200	-	-	-	2,200	-	2,200
Land	-	-	-	-	-	-	-	-	-	-
Construction	-	-	-	-	13,730	-	-	13,730	-	13,730
Furniture, Fixtures & Equip	-	-	-	-	1,670	-	-	1,670	-	1,670
Other	-	-	-	380	-	-	-	380	-	380
<b>Total Cost</b>	-	-	-	<b>2,580</b>	<b>15,400</b>	-	-	<b>17,980</b>	-	<b>17,980</b>
Local Tax Funding	-	-	-	380	-	-	-	380	-	380
General Obligation Bonds	-	-	-	2,200	15,400	-	-	17,600	-	17,600
Lease Revenue Financing	-	-	-	-	-	-	-	-	-	-
<b>Total Financing</b>	-	-	-	<b>2,580</b>	<b>15,400</b>	-	-	<b>17,980</b>	-	<b>17,980</b>

Operating Impact (\$ in 1000s)	FY 2019	FY 2020	FY 2021	FY 2022	FY 2023	FY 2024	Total
Debt Service	-	-	-	110	217	382	709
<b>Total Impact</b>	-	-	-	<b>110</b>	<b>217</b>	<b>382</b>	<b>709</b>