

Rhino Fiberglass Composite Posts

Our rugged lightweight line of fiber reinforced composite marker posts will not rust, rot, or corrode. All four sides are unaffected by temperature extremes from -40°F to +140°F.

STANDARD COLORS: Brown, Green, Red, Orange, Yellow, White. Custom colors are available with an additional charge.

POST TYPES: Rhino 4-Rail™, Rhino 3-Rail™, Rhino 1-Rail™, Rhino Fiberglass™.

PROVIDES FACILITY BOUNDARY IDENTIFICATION. SINGLE FLEXIBLE, COMPOSITE POST

SIGN LOCATION: AS APPLICABLE PER FACILITY; NO FARTHER THAN 300' APART

SIZE: 4" WIDE, 4' OVERALL HEIGHT, DOUBLE SIDED AS APPLICABLE

QUANTITY: AS APPLICABLE PER FACILITY

TEXT FONT: ARIAL NARROW BOLD

SIGN MESSAGE: PARK BOUNDARY

SIGN COLORS & GRAPHICS: BROWN POSTS WITH BROWN STICKER BACKGROUNDS AND WHITE BORDERS AND LETTERS; LOUDOUN COUNTY SEAL

SIGN MATERIALS: RHINO 4-RAIL™ FIBERGLASS COMPOSITE POST OR EQUIVALENT

INSTALLATION MATERIALS: RHINO PHD-100 PILOT HOLE DRIVER AND/OR RHINO FPD-44 FLAT POST DRIVER

ILLUMINATION: NONE



Rhino Fiberglass Composite Posts

Our rugged lightweight line of fiber reinforced composite marker posts will not rust, rot, or corrode. All four sides are unaffected by temperature extremes from -40°F to +140°F.

STANDARD COLORS: Brown, Green, Red, Orange, Yellow, White. Custom colors are available with an additional charge.

POST TYPES: Rhino 4-Rail™, Rhino 3-Rail™, Rhino 1-Rail™, Rhino Fiberglass™.

PROVIDES TRAIL NAME IDENTIFICATION AND DIRECTION. SINGLE FLEXIBLE, COMPOSITE POST

SIGN LOCATION: AS APPLICABLE PER FACILITY; NO FARTHER THAN 500' APART

SIZE: 4" WIDE, 4' OVERALL HEIGHT, DOUBLE SIDED AS APPLICABLE

QUANTITY: AS APPLICABLE PER FACILITY

TEXT FONT: ARIAL NARROW BOLD

SIGN MESSAGE: SPECIFIC TRAIL NAME

SIGN COLORS & GRAPHICS: GREEN POSTS WITH BROWN STICKER BACKGROUNDS AND WHITE BORDERS, LETTERS AND GENERAL SYMBOLS GE-2 "ARROW LEFT", GE-3 "ARROW RIGHT", GE-4 "ARROW UP", GE-5 "DOUBLE ARROW (180°)", AND/OR GE-6 "DOUBLE ARROW (90°)" AS APPLICABLE (VARIES PER TRAIL)

SIGN MATERIALS: RHINO 4-RAIL™ FIBERGLASS COMPOSITE POST OR EQUIVALENT; RHINO TRIVIEW FIBERGLASS COMPOSITE POST OR EQUIVALENT AT INTERSECTIONS

INSTALLATION MATERIALS: RHINO PHD-100 PILOT HOLE DRIVER AND/OR RHINO FPD-44 FLAT POST DRIVER

ILLUMINATION: NONE

Easy Installation Options

Direct Drive System, Tree Mounted System, U-Channel System, Nail Anchor System, Flat Fiberglass Post System.

For more details see Rhino Post presentation on all installation options.

To order call Rhino at 1-800-522-4343

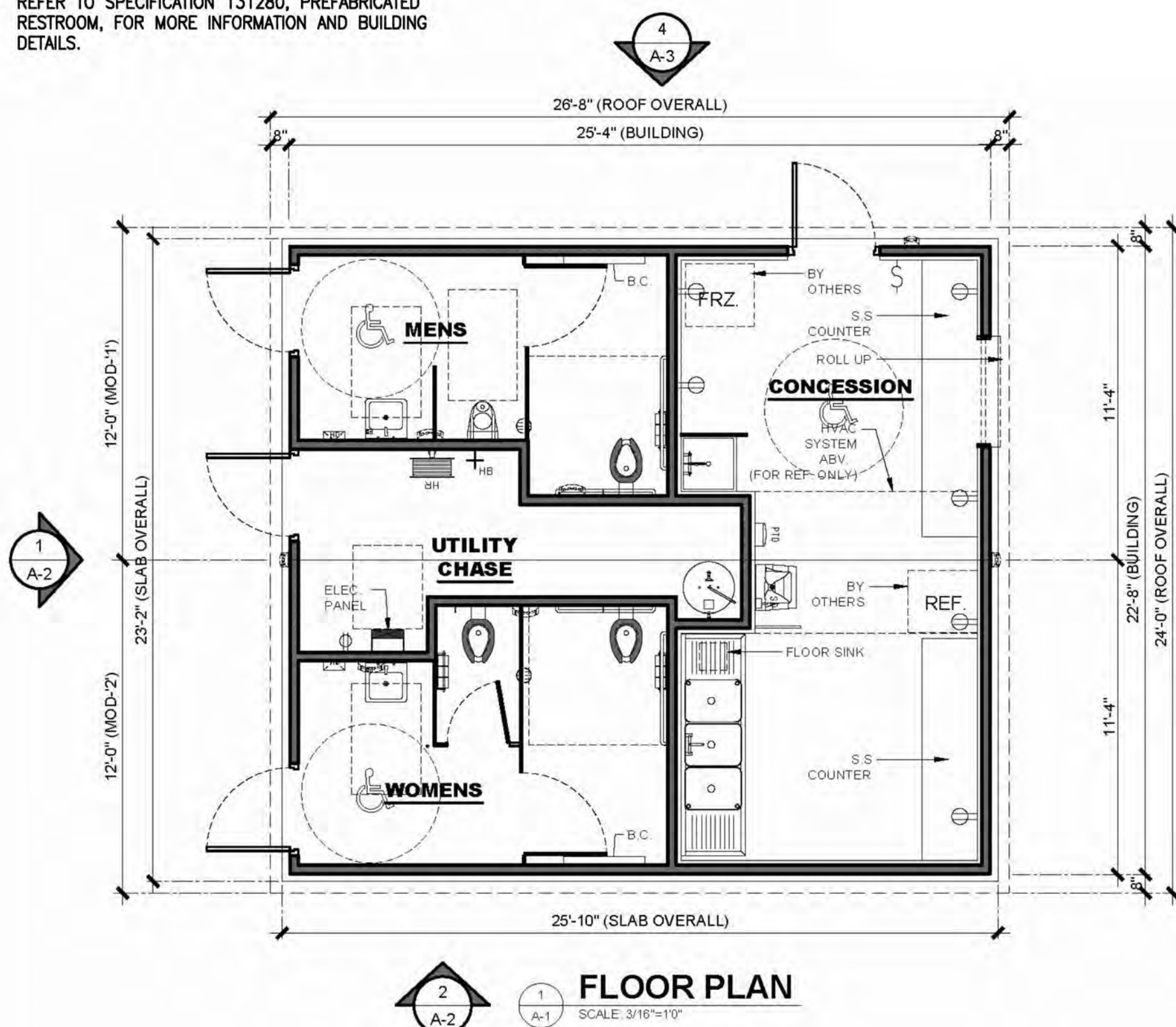


A BOUNDARY MARKER
SCALE: N.T.S.

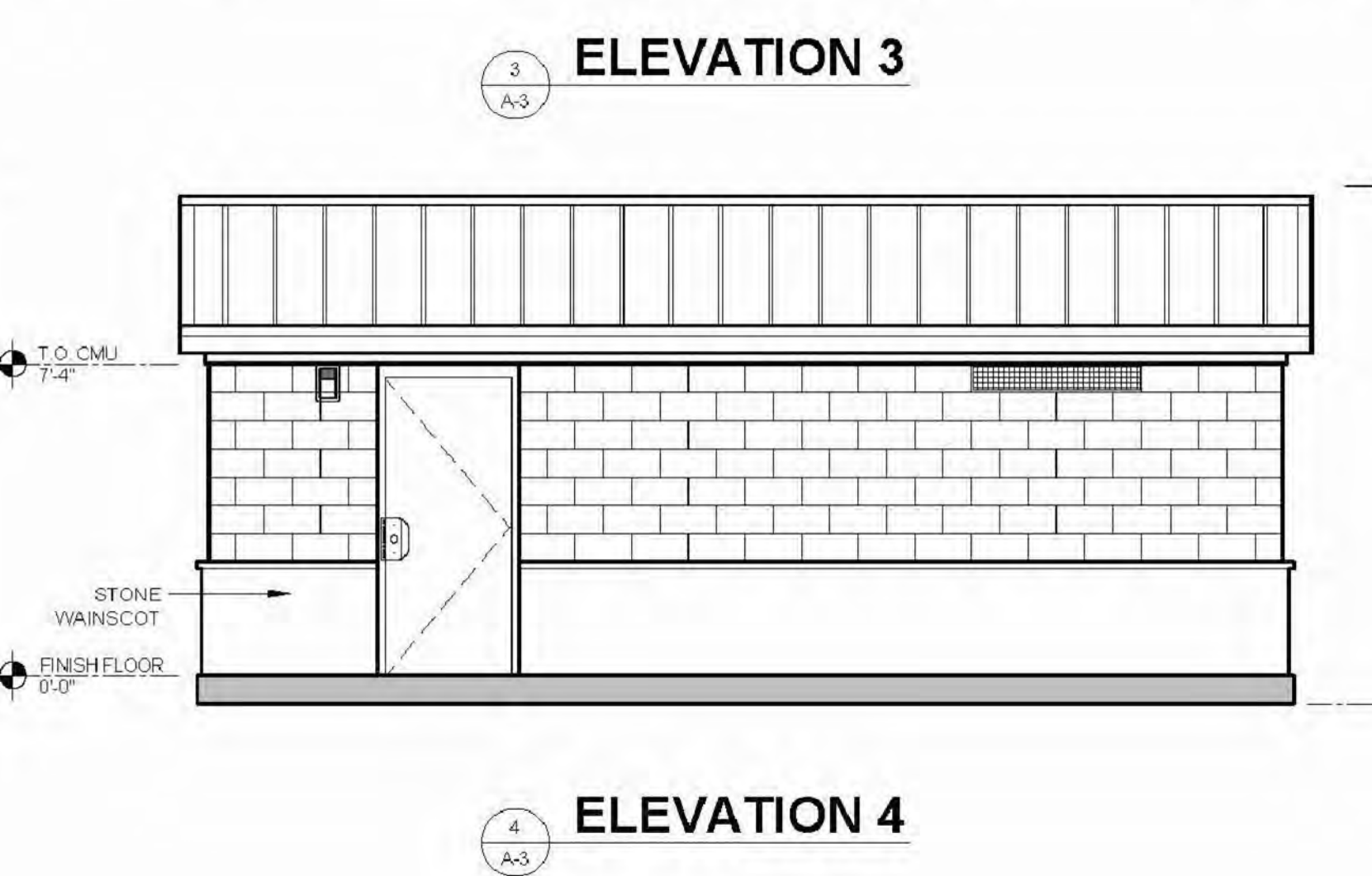
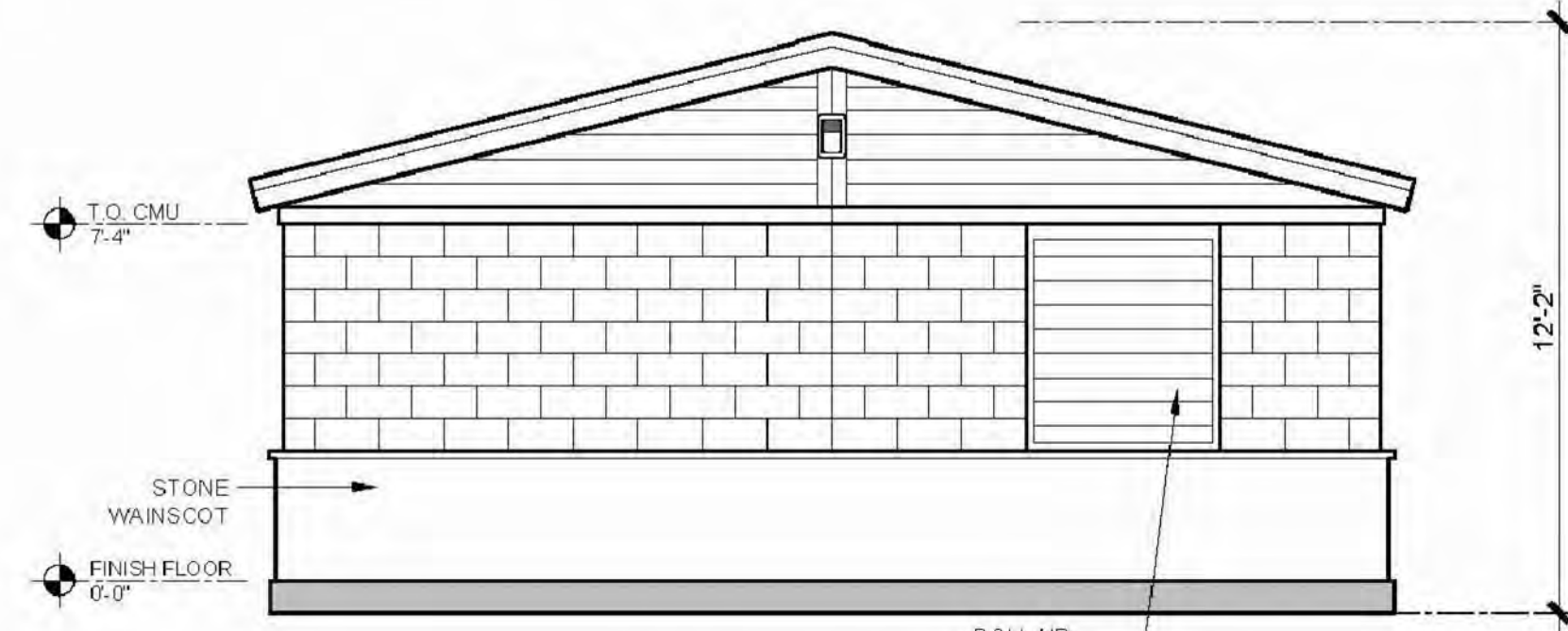
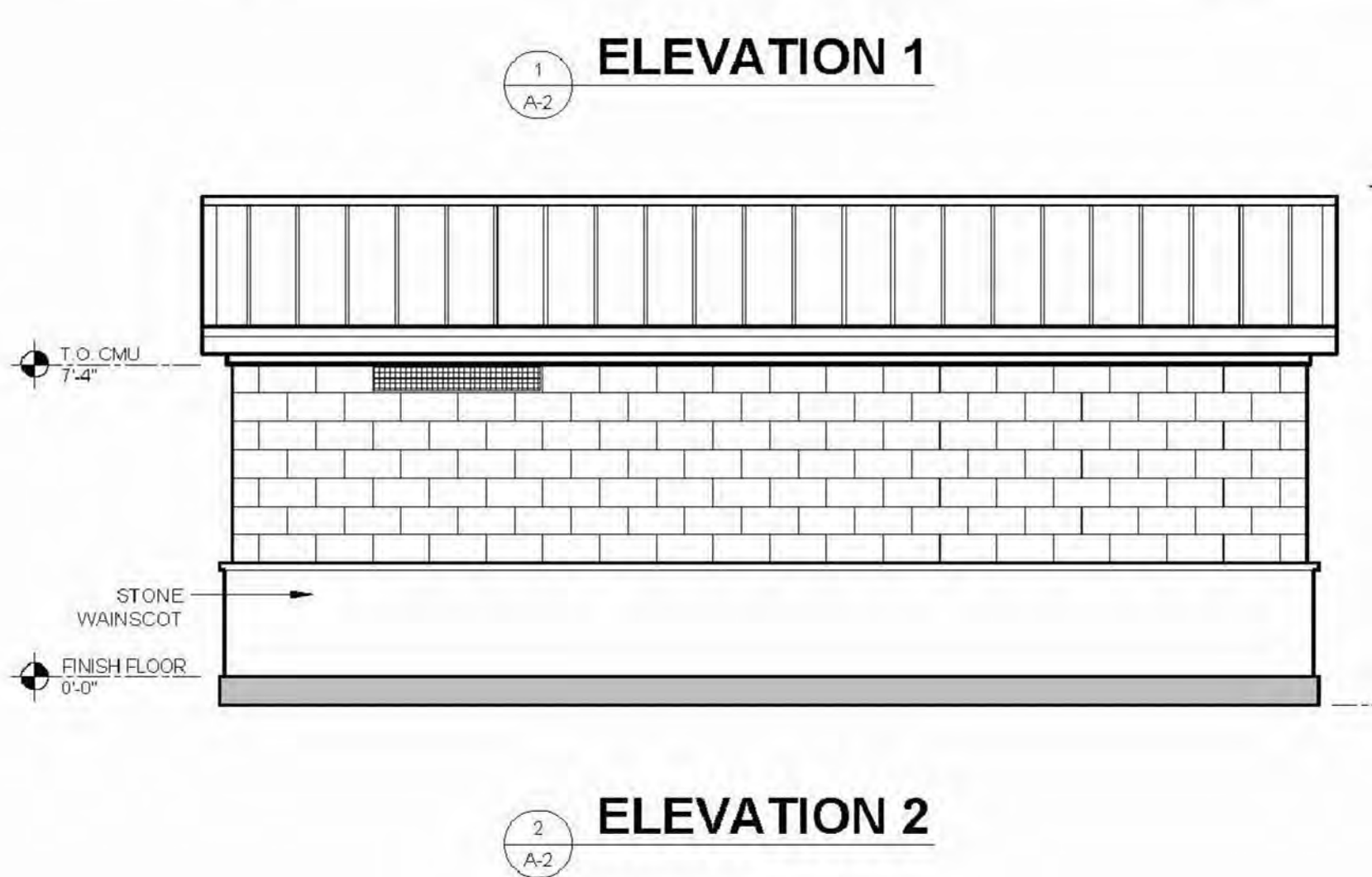
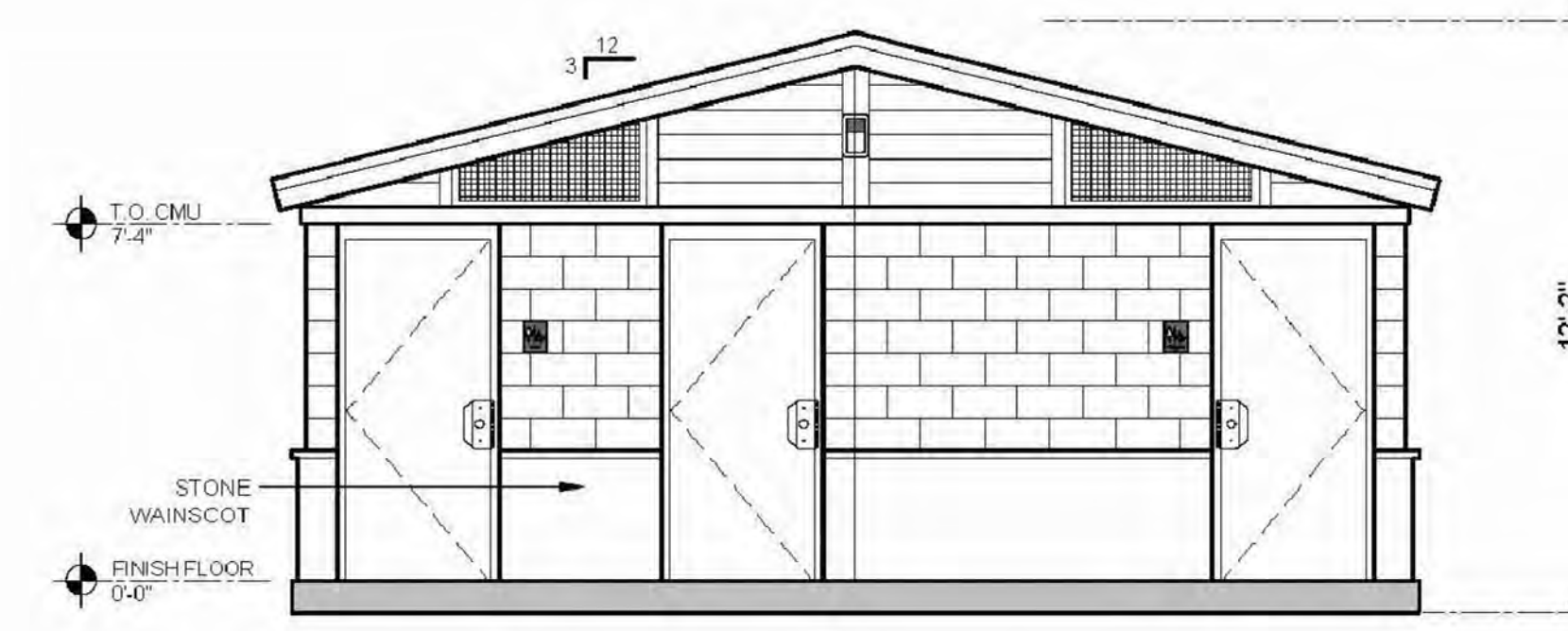
B TRAIL MARKER
SCALE: N.T.S.



- NOTES:**
- 3D RENDERINGS ONLY FOR REPRESENTATION. COLORS AND MATERIALS ARE SUBJECT TO CHANGE.
 - DRAWINGS PROVIDED ARE PRELIMINARY. FINAL MATERIALS AND COLORS TBD.
 - CONTRACTOR IS RESPONSIBLE FOR BUILDING FOUNDATION/CONCRETE SLAB WHICH SHALL BE DESIGNED BY A STRUCTURAL ENGINEER IN THE COMMONWEALTH OF VIRGINIA.
 - REFER TO SPECIFICATION 131280, PREFABRICATED RESTROOM, FOR MORE INFORMATION AND BUILDING DETAILS.



C RESTROOM / CONCESSION BUILDING
SCALE: N.T.S.



Gordon

PROGRAMMING AND PLANNING
CIVIL ENGINEERING
LANDSCAPE ARCHITECTURE
SURVEY AND MAPPING
SECURITY CONSULTING

4501 Daily Drive
Chantilly, VA 20151
Phone: 703-263-1900
www.gordon.us.com

REVISIONS	DESCRIPTION	NUMBER	DATE

SUR: GORDON	DES: ---
DRW: IB	CHK: BC

COMMONWEALTH OF VIRGINIA

Brian A. Cipriano
BRIAN A. CIPRIANO
Cert. No. 1484

LANDSCAPE ARCHITECT

SEAL:

SIGNAGE AND RESTROOM BUILDING DETAILS

POTOMAC GREENE NEIGHBORHOOD PARK

FINAL PARK DEVELOPMENT
20760 MARBLEHEAD DRIVE
ASHBURN, VIRGINIA 20147

HORIZ: AS NOTED
SCALE: VERT:
DATE: SEPTEMBER 2018
PLAN: ---
JOB: 3164-0101
CADD: 3164-0101-L-01-502.DWG
NCS: ---
NUMBER: L13 of 30

Gordon