



Capital Improvement Program Middle Schools

Contents

Middle Schools Summary	11-7
Middle School (MS 14) Dulles North	11-8
Middle School (MS 19) Undesignated Location	11-9



Middle Schools

Capital Improvement Program											
Middle Schools											
Capital (\$ in 1000s)	Prior Years	FY 2021	FY 2022	FY 2023	FY 2024	FY 2025	FY 2026	6 Year Total	Future FYs	Project Total	
Projects											
Middle School (MS-14) Dulles North	-	8,460	90,680	-	-	-	-	99,140	-	99,140	
Middle School (MS-19) Undesignated Location	-	-	-	-	-	-	13,585	13,585	99,620	113,205	
Total Cost	-	8,460	90,680	-	-	-	13,585	112,725	99,620	212,345	
Funding Source											
Local Tax Funding	-	-	10,370	-	-	-	3,396	13,766	-	13,766	
General Obligation Bonds	-	8,460	80,310	-	-	-	10,189	98,959	99,620	198,579	
Total Financing	-	8,460	90,680	-	-	-	13,585	112,725	99,620	212,345	



Middle Schools

Middle School (MS- 14) Dulles North

Details:

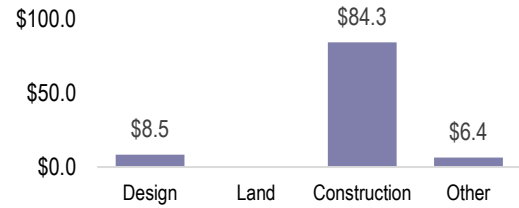
Project Number: n/a
Election District: Blue Ridge
Square Feet: 184,593
LCPS Planning District: Dulles North
Estimated Completion Year: FY 2025
Referendum: November 2019

Background:

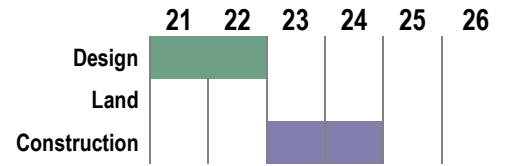
The middle school will be built using a two-story middle school design. The estimated 184,593-square-foot building will serve students in grades six through eight. With an anticipated program capacity of 1,445, the middle school design will utilize the 'house' concept for each grade and will include classrooms, a media center, cafeteria, auditorium, gymnasium, auxiliary gymnasium, and unlighted outdoor physical education fields.

FY 2022 includes additional funding for extraordinary site costs identified for the future site of MS-14 including site preparation earthwork, right-of-way acquisition, and road development. The identified site will also be the future location for HS-14, an elementary school, and the Field House/Indoor Track Facility.

Phase Costs in Millions



Project Phase Timeline by FY



Capital (\$ in 1000s)	Prior Years	FY 2021	FY 2022	FY 2023	FY 2024	FY 2025	FY 2026	6 Year Total	Future FYs	Project Total
Professional Services	-	8,460	-	-	-	-	-	8,460	-	8,460
Construction	-	-	84,280	-	-	-	-	84,280	-	84,280
Furniture, Fixtures & Equip	-	-	6,400	-	-	-	-	6,400	-	6,400
Total Cost	-	8,460	90,680	-	-	-	-	99,140	-	99,140
Local Tax Funding	-	-	10,370	-	-	-	-	10,370	-	10,370
General Obligation Bonds	-	8,460	80,310	-	-	-	-	88,770	-	88,770
Total Financing	-	8,460	90,680	-	-	-	-	99,140	-	99,140

Operating Impact (\$ in 1000s)	FY 2021	FY 2022	FY 2023	FY 2024	FY 2025	FY 2026	Total
Debt Service	-	-	2,730	7,556	8,606	8,367	27,258
Total Impact	-	-	2,730	7,556	8,606	8,367	27,258



Middle Schools

Middle School (MS- 19) Undesignated Location

Details:

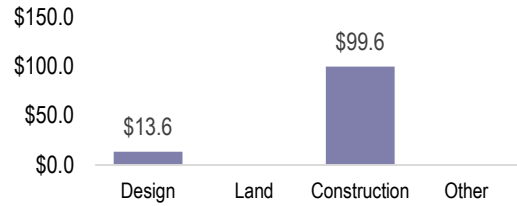
Project Number: n/a
Election District: n/a
Square Feet: 184,593
LCPS Planning District: n/a
Estimated Opening Year: FY 2030
Referendum: November 2024

Background:

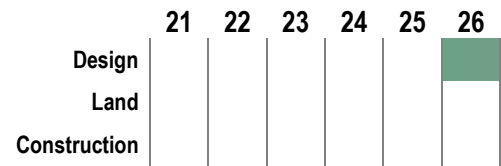
The middle school will be built using a two-story middle school design. The estimated 184,593-square-foot building will serve students in grades six through eight. With an anticipated program capacity of 1,445, the middle school design will use the 'house' concept for each grade and will include classrooms, a media center, cafeteria, auditorium, gymnasium, auxiliary gymnasium, and unlighted outdoor physical education fields.

A site will need to be acquired for MS-19.

Phase Costs in Millions



Project Phase Timeline by FY



Capital (\$ in 1000s)	Prior Years	FY 2021	FY 2022	FY 2023	FY 2024	FY 2025	FY 2026	6 Year Total	Future FYs	Project Total
Professional Services	-	-	-	-	-	-	13,585	13,585	-	13,585
Construction	-	-	-	-	-	-	-	-	99,620	99,620
Total Cost	-	-	-	-	-	-	13,585	13,585	99,620	113,205
Local Tax Funding	-	-	-	-	-	-	3,396	3,396	-	3,396
General Obligation Bonds	-	-	-	-	-	-	10,189	10,189	99,620	109,809
Total Financing	-	-	-	-	-	-	13,585	13,585	99,620	113,205