

# **LOUDOUN COUNTY**

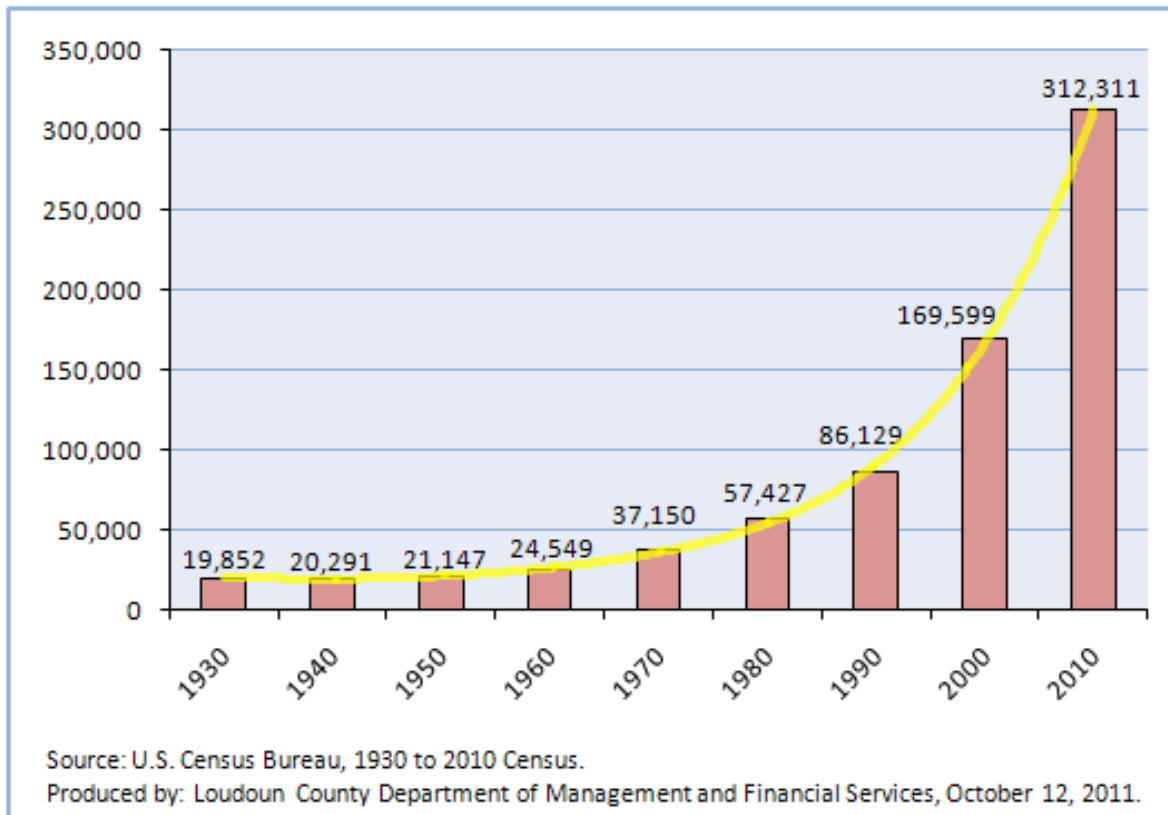


# **2010 CENSUS HIGHLIGHTS**

**DEPARTMENT OF MANAGEMENT AND FINANCIAL SERVICES**

**DECEMBER 8, 2011**

## DECENNIAL POPULATION, 1930 TO 2010



## FASTEST GROWING COUNTIES IN THE UNITED STATES, 2000 TO 2010

| TEN FASTEST GROWING COUNTIES: 2000 TO 2010 |                |                |                  |              |
|--|----------------|----------------|------------------|--------------|
|  | 2000           | 2010           | Change 2000-2010 |              |
|  | #              | #              | #                | Percent      |
| Kendall, IL                                | 54,544         | 114,736        | 60,192           | 110.4%       |
| Pinal, AZ                                  | 179,727        | 375,770        | 196,043          | 109.1%       |
| Flagler, FL                                | 49,832         | 95,696         | 45,864           | 92.0%        |
| Lincoln, SD                                | 24,131         | 44,828         | 20,697           | 85.8%        |
| <b>Loudoun, VA</b>                         | <b>169,599</b> | <b>312,311</b> | <b>142,712</b>   | <b>84.1%</b> |
| Rockwall, TX                               | 43,080         | 78,337         | 35,257           | 81.8%        |
| Forsyth, GA                                | 98,407         | 175,511        | 77,104           | 78.4%        |
| Sumter, FL                                 | 53,345         | 93,420         | 40,075           | 75.1%        |
| Paulding, GA                               | 81,678         | 142,324        | 60,646           | 74.3%        |
| Henry, GA                                  | 119,341        | 203,922        | 84,581           | 70.9%        |

Note: Among Counties with Census 2000 populations of 10,000 or more.

Source: U.S. Census Bureau, 2000 and 2010 Census.

Produced by: Loudoun County Department of Management and Financial Services,  
October 12, 2011.

## RACE AND ETHNIC CHARACTERISTICS OF POPULATION, 2000 AND 2010

| RACE                                |            |              |            |              |                  |         |
|-------------------------------------|------------|--------------|------------|--------------|------------------|---------|
| Race                                | 2000       |              | 2010       |              | Change 2000-2010 |         |
|                                     | Population | Distribution | Population | Distribution | Number           | Percent |
| One Race                            | 165,469    | 97.6%        | 299,736    | 96.0%        | 134,267          | 81.1%   |
| White                               | 140,419    | 82.8%        | 214,471    | 68.7%        | 74,052           | 52.7%   |
| Black or African American           | 11,683     | 6.9%         | 22,710     | 7.3%         | 11,027           | 94.4%   |
| American Indian or Alaskan Native   | 358        | 0.2%         | 914        | 0.3%         | 556              | 155.3%  |
| Asian                               | 9,067      | 5.3%         | 46,033     | 14.7%        | 36,966           | 407.7%  |
| Native Hawaiian or Pacific Islander | 105        | 0.1%         | 184        | 0.1%         | 79               | 75.2%   |
| Some Other Race                     | 3,837      | 2.3%         | 15,424     | 4.9%         | 11,587           | 302.0%  |
| Two or more races                   | 4,130      | 2.4%         | 12,575     | 4.0%         | 8,445            | 204.5%  |
| Total                               | 169,599    | 100.0%       | 312,311    | 100.0%       | 142,712          | 84.1%   |

| ETHNICITY                             |            |              |            |              |                  |              |
|---------------------------------------|------------|--------------|------------|--------------|------------------|--------------|
| Ethnicity                             | 2000       |              | 2010       |              | Change 2000-2010 |              |
|                                       | Population | Distribution | Population | Distribution | Population       | Distribution |
| Hispanic or Latino (any race)         | 10,089     | 5.9%         | 38,576     | 12.4%        | 28,487           | 282.4%       |
| Non-Hispanic or Non-Latino (any race) | 159,510    | 94.1%        | 273,735    | 87.6%        | 114,225          | 71.6%        |
| Total                                 | 169,599    | 100.0%       | 312,311    | 100.0%       | 142,712          | 84.1%        |

Note: Percentages may not sum to 100% due to rounding.

Source: U.S. Census Bureau, 2000 and 2010 Census.

Produced by: Loudoun County Department of Management and Financial Services, October 12, 2011.

## AGE CHARACTERISTICS OF POPULATION, 2000 AND 2010

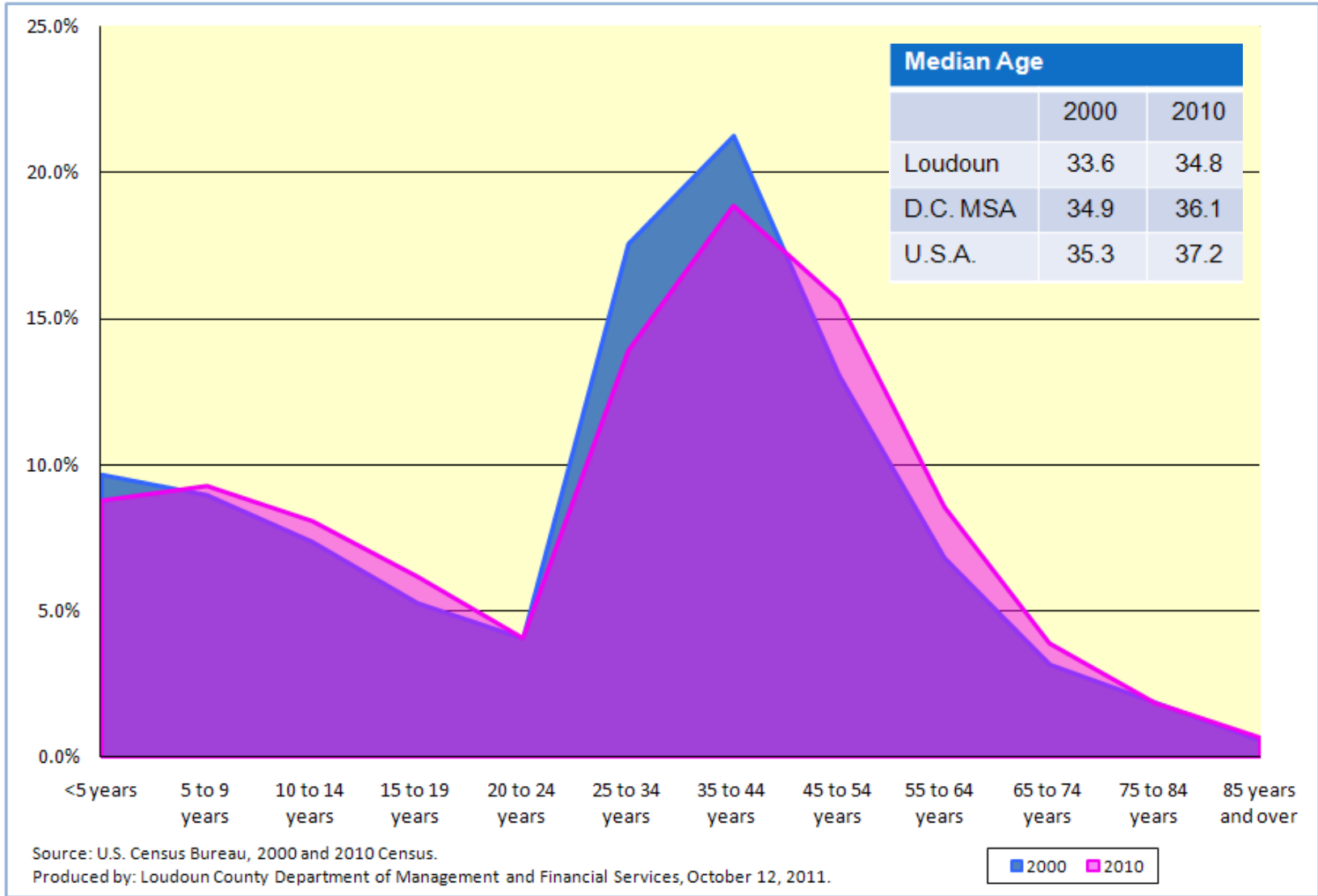
| AGE               |                |               |                |               |                  |              |
|-------------------|----------------|---------------|----------------|---------------|------------------|--------------|
| Age               | 2000           |               | 2010           |               | Change 2000-2010 |              |
|                   | Population     | Distribution  | Population     | Distribution  | Number           | Percent      |
| <5 years          | 16,461         | 9.7%          | 27,538         | 8.8%          | 11,077           | 67.3%        |
| 5 to 9 years      | 15,269         | 9.0%          | 28,998         | 9.3%          | 13,729           | 89.9%        |
| 10 to 14 years    | 12,538         | 7.4%          | 25,273         | 8.1%          | 12,735           | 101.6%       |
| 15 to 19 years    | 9,031          | 5.3%          | 19,233         | 6.2%          | 10,202           | 113.0%       |
| 20 to 24 years    | 6,908          | 4.1%          | 12,720         | 4.1%          | 5,812            | 84.1%        |
| 25 to 34 years    | 29,920         | 17.6%         | 43,483         | 13.9%         | 13,563           | 45.3%        |
| 35 to 44 years    | 36,086         | 21.3%         | 58,953         | 18.9%         | 22,867           | 63.4%        |
| 45 to 54 years    | 22,232         | 13.1%         | 48,852         | 15.6%         | 26,620           | 119.7%       |
| 55 to 59 years    | 7,227          | 4.3%          | 15,167         | 4.9%          | 7,940            | 109.9%       |
| 60 to 64 years    | 4,389          | 2.6%          | 11,669         | 3.7%          | 7,280            | 165.9%       |
| 65 to 74 years    | 5,402          | 3.2%          | 12,241         | 3.9%          | 6,839            | 126.6%       |
| 75 to 84 years    | 3,143          | 1.9%          | 5,899          | 1.9%          | 2,756            | 87.7%        |
| 85 years and over | 993            | 0.6%          | 2,285          | 0.7%          | 1,292            | 130.1%       |
| <b>Total</b>      | <b>169,599</b> | <b>100.0%</b> | <b>312,311</b> | <b>100.0%</b> | <b>142,712</b>   | <b>84.1%</b> |

Note: Percentages may not sum to 100% due to rounding.

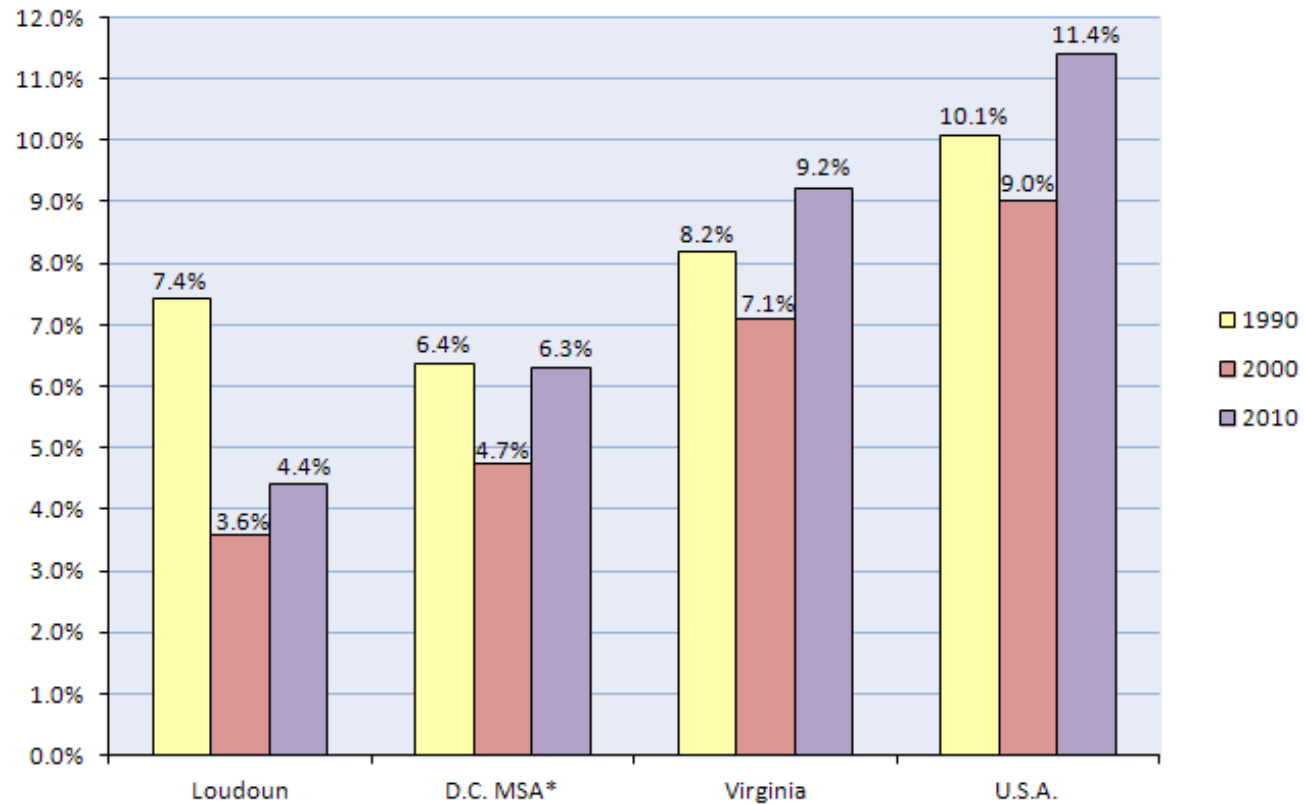
Source: U.S. Census Bureau, 2000 and 2010 Census.

Produced by: Loudoun County Department of Management and Financial Services, October 12, 2011.

## AGE DISTRIBUTION, 2000 AND 2010



## HOUSING UNIT VACANCY RATE, 1990 TO 2010

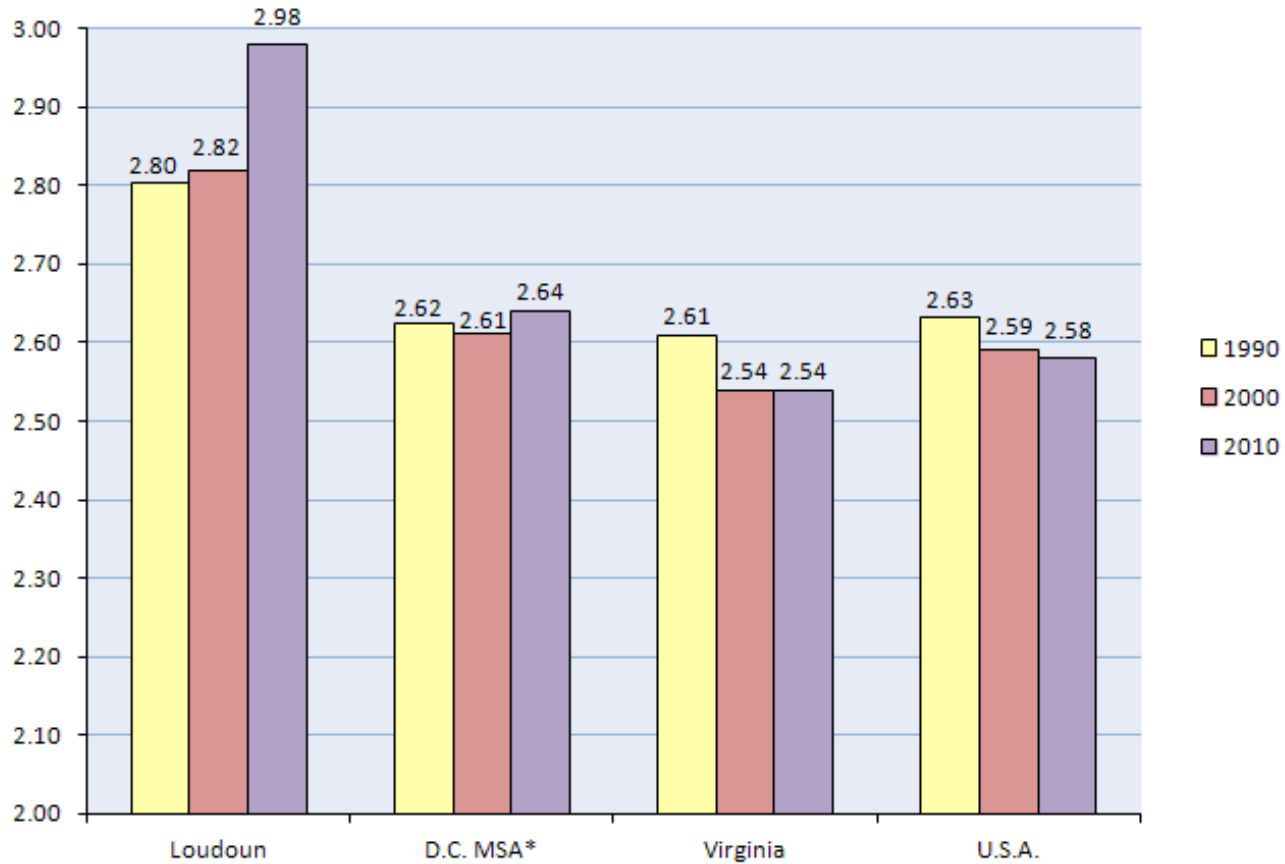


\* D.C. Metropolitan Statistical Area (MSA) as defined per the Office of Management and Budget, December 2009 definition.

Source: U.S. Census Bureau, 2000 and 2010 Census.

Produced by: Loudoun County Department of Management and Financial Services, November 30, 2011.

## AVERAGE HOUSEHOLD SIZE, 1990 TO 2010



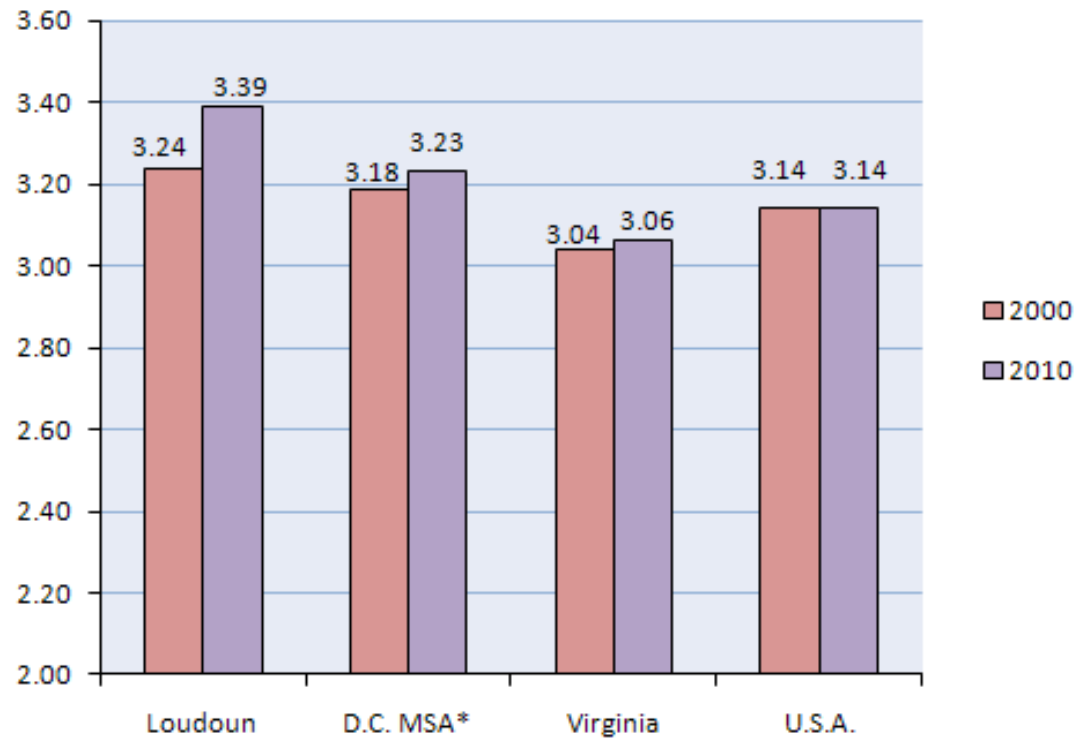
\* D.C. Metropolitan Statistical Area (MSA) as defined per the Office of Management and Budget, December 2009 definition.

Source: U.S. Census Bureau, 2000 and 2010 Census.

Produced by: Loudoun County Department of Management and Financial Services, November 30, 2011.



## AVERAGE FAMILY SIZE, 2000 AND 2010

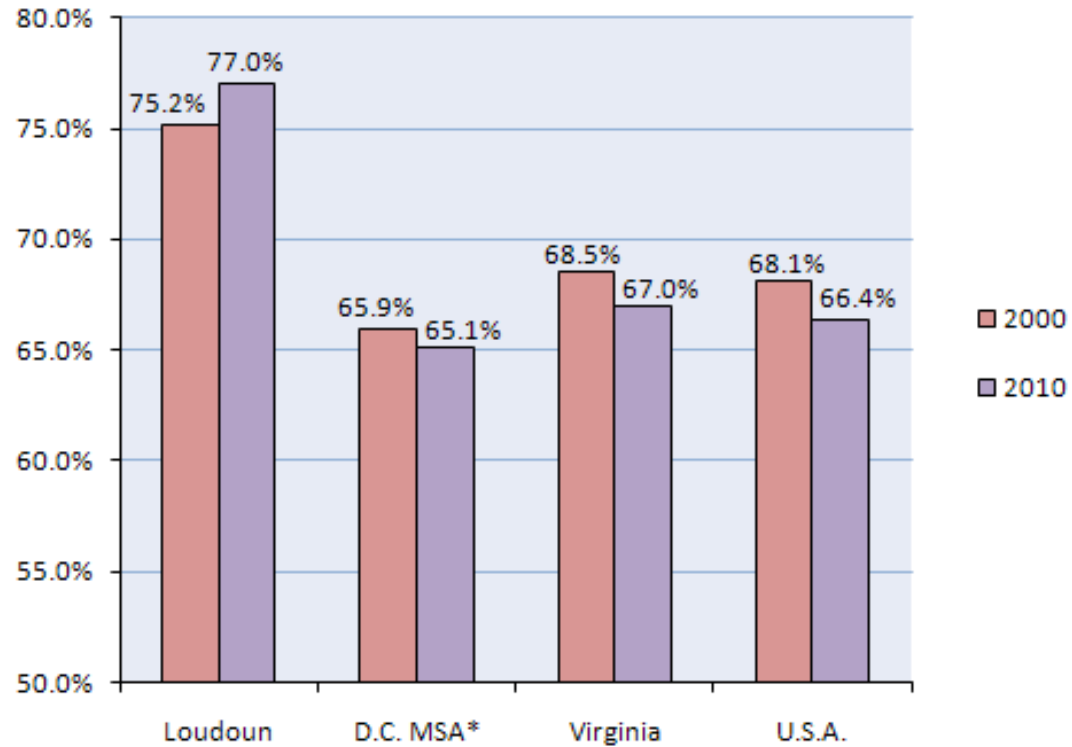


\* D.C. Metropolitan Statistical Area (MSA) as defined per the Office of Management and Budget, December 2009 definition.

Source: U.S. Census Bureau, 2000 and 2010 Census.

Produced by: Loudoun County Department of Management and Financial Services, October 12, 2011.

## SHARE OF HOUSEHOLDS WITH FAMILIES, 2000 AND 2010

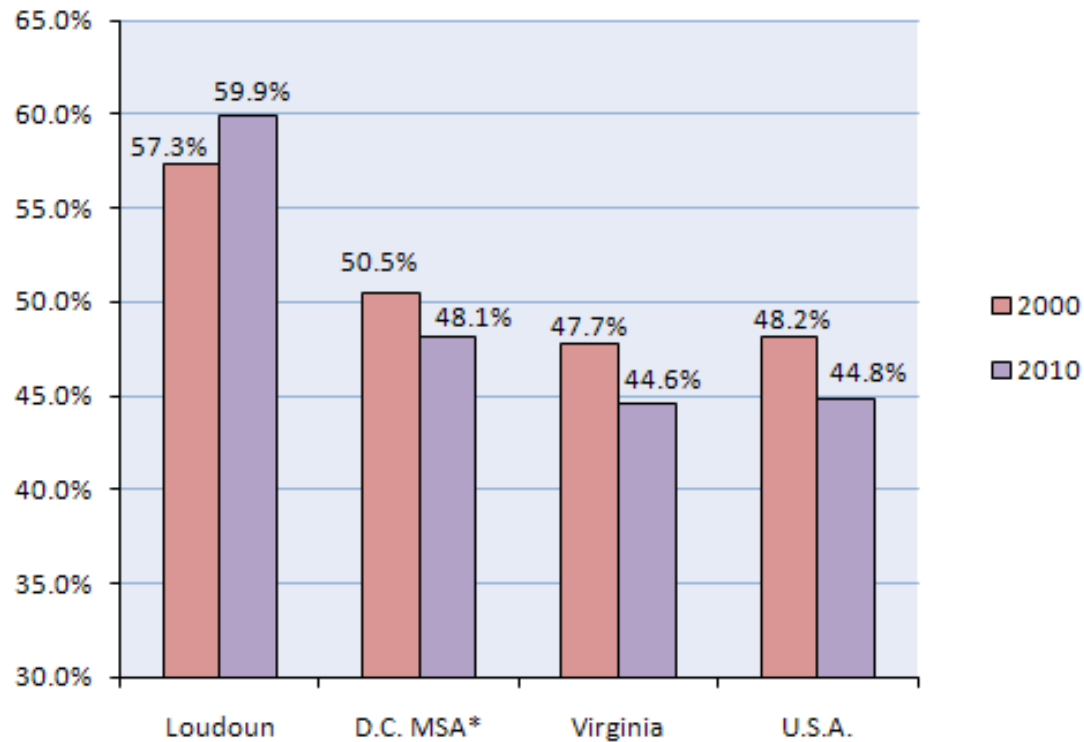


\* D.C. Metropolitan Statistical Area (MSA) as defined per the Office of Management and Budget, December 2009 definition.

Source: U.S. Census Bureau, 2000 and 2010 Census.

Produced by: Loudoun County Department of Management and Financial Services, October 12, 2011.

## SHARE OF FAMILY HOUSEHOLDS WITH CHILDREN UNDER 18 YEARS, 2000 AND 2010



\* D.C. Metropolitan Statistical Area (MSA) as defined per the Office of Management and Budget, December 2009 definition.

Source: U.S. Census Bureau, 2000 and 2010 Census.

Produced by: Loudoun County Department of Management and Financial Services, October 12, 2011.